

## LA-8ND

### *2-WAY Bi-Amp Line Array* Loudspeaker

#### DESCRIPTIONS

The LA-8ND Two-way Line Array cabinet is designed for high quality sound reinforcement in medium to small venues with a wide range of applications. Use of advanced modern technologies such as Neodymium speakers and solid birch plywood, combined with glass-fiber reinforced plastic, create a rugged and light-weight cabinet making the LA-8ND a very sturdy and powerful loudspeaker.

The LA-8ND has a newly designed high compress, narrow angle HF horn, for crisp, clear and far sound reproduction. Cabinets are available with built-in passive crossover or as Bi-Amp models.

Vertical variation angles of  $0^\circ$ ,  $2.5^\circ$ , or  $5^\circ$  are possible between the cabinets, leading to outstanding system performance. The optimal setup is 10 cabinets per array.

The LA-8sND subwoofer cabinet can be combined in the same Array as a LF assist with direct shooting technology, making the LA-8 a very efficient Line Array system.

#### DRIVERS

##### LA-8ND

Low Frequency(neodymium magnet):

2 x 8(inch) 210 mm dia ,

44 mm(1.73inch)voice coil dia

High Frequency(neodymium magnet):

1 x 1.73(inch) 44 mm voice coil dia ,

23 mm(1inch)throat dia

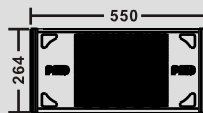
##### LA-8s ND

Low Frequency:

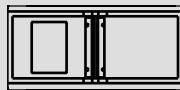
2 x 10(inch) 260 mm dia , 50 mm(2inch)voice coil dia

**PHD**  
PROFESSIONAL

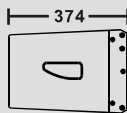
# LA-SERIES



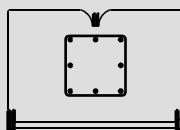
Front



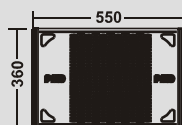
Back



Side



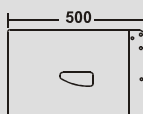
Top



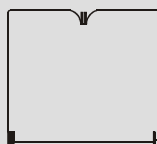
Front



Back



Side



Top

## SPECIFICATIONS

### LA-8ND

Frequency Response	65 Hz - 20 kHz ( $\pm 3$ dB)
Sensitivity	96dB SPL (1W@1m)
Nominal Impedance	passive 8 ohms, active LMF 8 ohms, HF 8 ohms
Power Handling	passive 300 Watts (rms), 1200 Watts (peak) active LMF 240 Watts (rms), 960 Watts (peak) HF 60 Watts (rms), 240 Watts (peak)

Maximum SPL	120 dB
Nominal Coverage Angle (-6 dB)	horizontal 120° varies with array size and configuration

Crossover Frequency	1.8 kHz
Recommended High Pass Filter	high pass => 100 Hz , 24 dB/octave
Enclosure Construction	18 mm birch plywood with rugged
Finish	Wear-resistant textured coating
Grille	Powder coated perforated steel, foam backed
Suspension Hardware	Proprietary PHD rigging system
Input Connectors	Speakon NL4 x 2
Dimensions (H x W x D)	264mm x 550mm x 374mm
Net Weight	19.8 kg

### LA-8s ND

Frequency Response	45 Hz - 150 Hz ( $\pm 3$ dB)
Sensitivity	97 dB
Nominal Impedance	8 ohms
Power Handling	400 watts (rms) , 1000 watts (peak)
Maximum SPL	123 dB
Recommended Low Pass Filter	low pass =< 100 Hz , 24 dB/octave
Dimensions (H x W x D)	360 mm x 550 mm x 500 mm
Net Weight	28 kg

## FEATURES

### LA-8ND

- 2-way line array system
- Power-output with high sensitivity;
- Coverage with far distance
- Professional flying settings with safety and reliability, easy to install
- Each two unit paralleled as one input group
- Together with LA8sub as low frequency reinforcement
- Frequency division with processor
- Heat-resistant

### LA-8s ND

- 2 x 10" subwoofer system
- Direct-shooting (looks like mirror reflection) technology of driver
- Strong LF output
- Flying with LA8ND as subwoofer to line array system
- Equipped with LA8ND
- Frequency division with processor
- Heat-resistant

## APPLICATIONS

- Medium and small arenas, stadiums, gymnasiums and performance events with audiences of over 3,000 people and an optimal distance of 25m from front speakers.